



BIRMINGHAM
HIPPODROME

Technical Details And Contacts

(Last Updated September 2019)



**PATRICK
STUDIO**

Contents

- Page 3 Contact details
- Page 4 Venue plan
- Page 5 Dimensions and other measurements
- Page 6 Lighting equipment and systems
- Page 7 Sound equipment and systems
- Page 8 Entire site layout
- Page 9 Dressing room information
- Page 10 Other information
- Page 11 Notes
- Page 12 Location details

Contact Details

Postal address	Birmingham Hippodrome Theatre Hurst Street Birmingham West Midlands B5 4TB
Stage Door	0870 7302040
Ticket sales	0870 7301234
Ticket sales fax	0870 7305030
Group Sales	0870 7304321
Administration	0870 7305555

Technical Contacts for the Patrick Studio

Christopher Ball	Technical Production Manager
Erika Jarvis	Technical Supervisor - Production
Frankie Payne	Technical Production Assistant

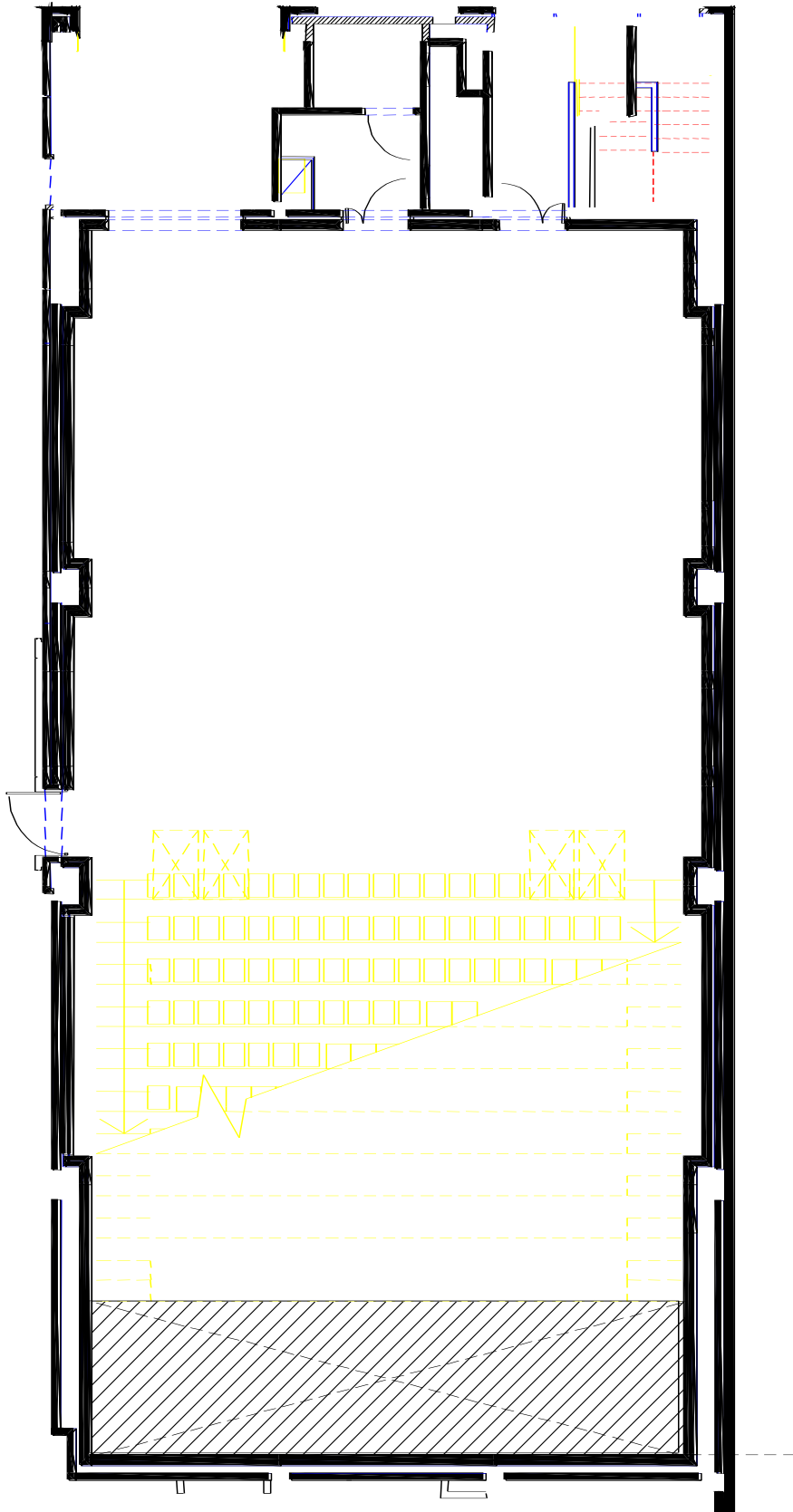
Technical Office Contact details

Phone Tel: 0121 689 3096

Email: stagetech@birminghamhippodrome.com

Patrick Studio

Venue Plan



Patrick Studio

Stage Dimensions and other measurements

Please note that the grid is fixed and none of the bars fly in.

There are weight limits on the grid so please let us know your plans as soon as possible so we can advise if there would be any problems

Height of Grid	6 metres
O/D grid bars	48 mm
Length of studio with seating retracted	21.50 metres
Maximum width (between columns)	11.9 metres
Normal acting area	9 x 9 metres
Balcony rail to mid stage black tabs	13.6 metres
Mid stage black tabs to cyc	6.4 metres
Balcony rail to cyc	20 metres
Width of cyc (between legs)	9 metres
Height of cyc (border to stage)	5.3 metres
Balcony rail to front of control room	2.15 metres

Stage Equipment and Systems

Softs

10 x 1m wide 6m Drop black legs
Up stage Black tabs (Pleated) fixed location tracked via pulley US SL
Mid Stage Black tabs (Pleated) fixed location tracked via pulley Mid SL
1 x Full width White Cyc on fixed location winch bar just behind US Tabs
3 x 300m Drop Black Borders to hide Tab Tracks (non moveable)
NO other Borders available

Floor

Whole floor is Junkers Sprung Floor – Light coloured wood
Black Harlequin Dance Lino

Dance lino is down as standard if this need removing please inform the Technical Production Manager

Please Note that there can be No floor or wall Fixings in the Patrick Studio

Points

9 x 1 Ton Points
Locations - 3 x US between US tabs and cyc, 3 x Mid stage and 3 x DS

Please contact Technical Production Manager if you wish to use these

Get In Area

Access off Thorp street with covered loading area suitable for transit size vehicle.

N.B: There is no onsite parking

Washing Facilities

BHTT has on site Laundry facilities of 2 x washing machines and 1 x tumble dryer these are shared with the main house, please tell us at least 4 weeks before the Get In if you wish to use these machines so we can lease with the main house shows, Please note we do not provide washing powder or softener. We have an iron and ironing board available for use, please let us know if you wish to use these

Patrick Studio

Lighting Equipment and Systems

<u>Lighting Desk</u>	ETC Gio and Ion backup 3245 channels
<u>Dimmers</u>	ETC Sensor dimmers. 140 ways of dimming.
<u>Stage Power</u>	125A 3 phase Cee Form 63A single phase Cee Form
<u>Control Room Power</u>	16A Single Phase Cee Form 32A Single Phase Cee Form

Available Equipment

<u>Fresnel and PC's</u>	6 x 2k ADB Fresnel 6 x 1.2Kw Strand Cantata PC 14 x 1.2Kw Strand Cantata Fresnel 12 x 650W Strand Prelude Fresnel 8 x 650W Strand Prelude PC
<u>Profiles</u>	24 x 750w ETC Source 4 (25/50) (Booms) 16 x 750w ETC Source 4 (25/50) (Overhead)
<u>Flood units</u>	5 x Leader Light LL Wash (to cover the Cyc)
<u>Beam lights</u>	30 x Thomas PAR 64's (10 x these are pre rigged Chroma Q scroller wash)
<u>House Lights</u>	GDS LED Down lights controlled Via DMX and touch screen Please note due to H&S and Fire Regs the House lights over the tiered seats will remain on at 5% throughout ALL performances, no exceptions and these cannot be turned off or made dimmer. Emergency Exits cannot be turned off but could be covered temporary via members of FOH staff, This will have to be fully agreed by the Technical Production Manager at least 4 weeks before the Get In, Fully Risk Assessed via BHTT and Visiting company and will incur extra staff costs

Notes

Please provide a venue specific lighting plan for all Visiting companies no later than 4 weeks before Get it or Pre rig
Additional LX Equipment available at additional charges
There are 8 mini booms on wheels, height of 2.5 metres
House Moving lights cannot be moved from fixed locations due to weight loading of the grid.
Scrollers cannot be moved without prior consultation with the Technical Production Manager.
A Unique 2.1 hazer and Jem smoke machine are available – these incur an additional charge
There are 10 circuits per bar.

N.B. the Patrick Studio operates a standard lighting rig, with fixed locations for the house movers and scrollers, the rest of the generic rig can be re rigged to suit your show however on the get out the standard rig set up will needed to be fully reinstated before the get out finishes

Patrick Studio

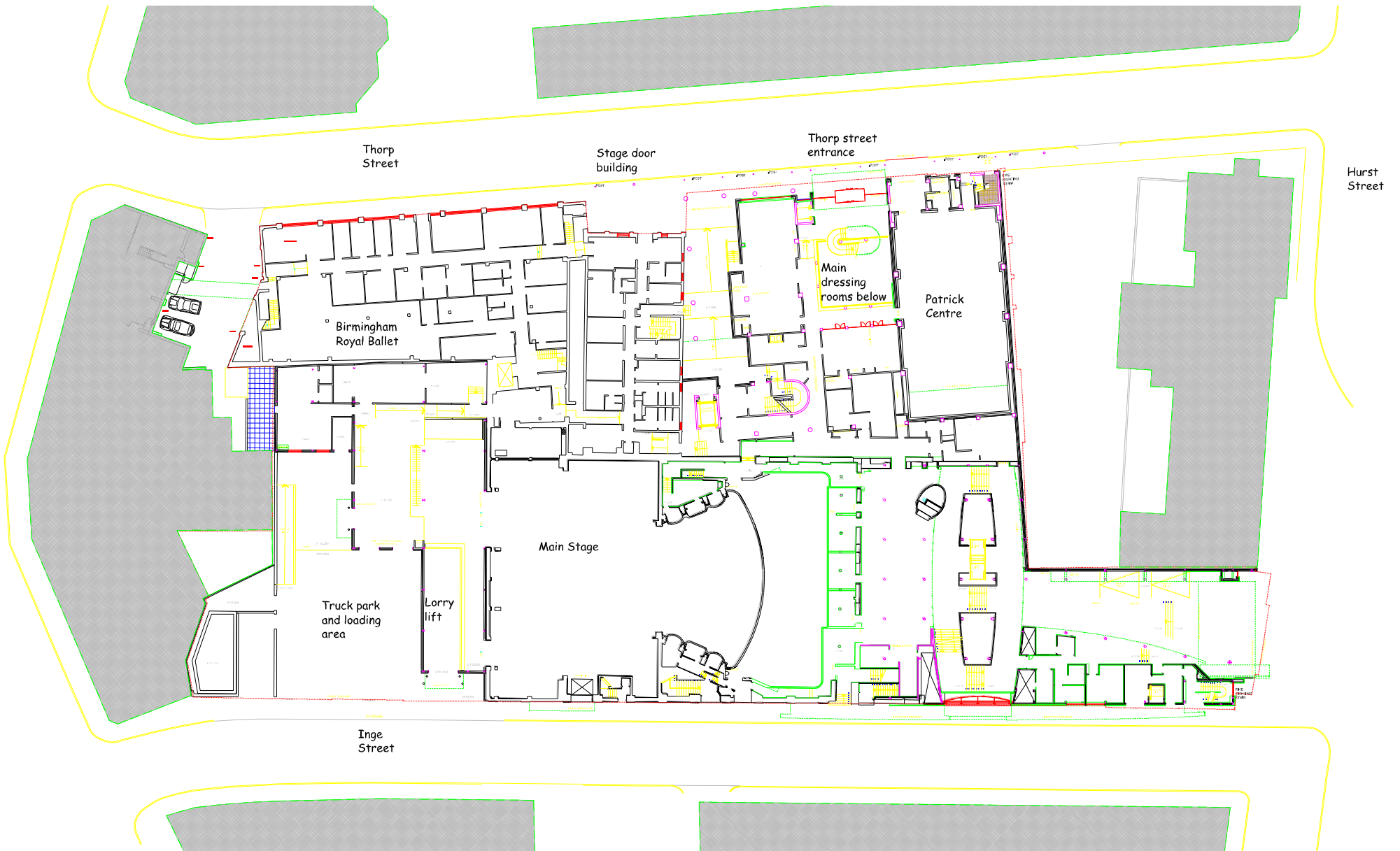
Sound Equipment and Systems

<u>Main PA & Amplification</u>	d&b T Series Line Array & T Subs
<u>Mixer desk</u>	Digico S21 48 Flexi-channels 16 Flexi Aux/Sub group buses
<u>Playback Equipment</u>	1 x Denon DN - C635 CD player 1 x Tascam MD – 301 MiniDisc player Mini mac with QLab3 - Audio only
<u>Processing</u>	In-desk FX rack and Graphic EQ including - 4 Compressors 8 Digital FX 16 Assignable Graphic EQs
<u>Microphones</u>	2 x Shure SM58's 2 x Sennheiser ew500 G3 radio mics 2 x Microphone stands for above
<u>Communication</u>	Metro Audio – Single ring communications loop With 3 belts packs and 3 headsets
<u>Show Relay</u>	Audio show relay distributed to studio technical areas and dressing rooms.
<u>Music Stands (R.A.T.)</u>	4 x lit R.A.T. stands.

Notes

Both lighting and sound can be operated outside on the balcony. If this is preferred, please advise at least 4 weeks before the Get In as the appropriate seats will need to be held off sale.

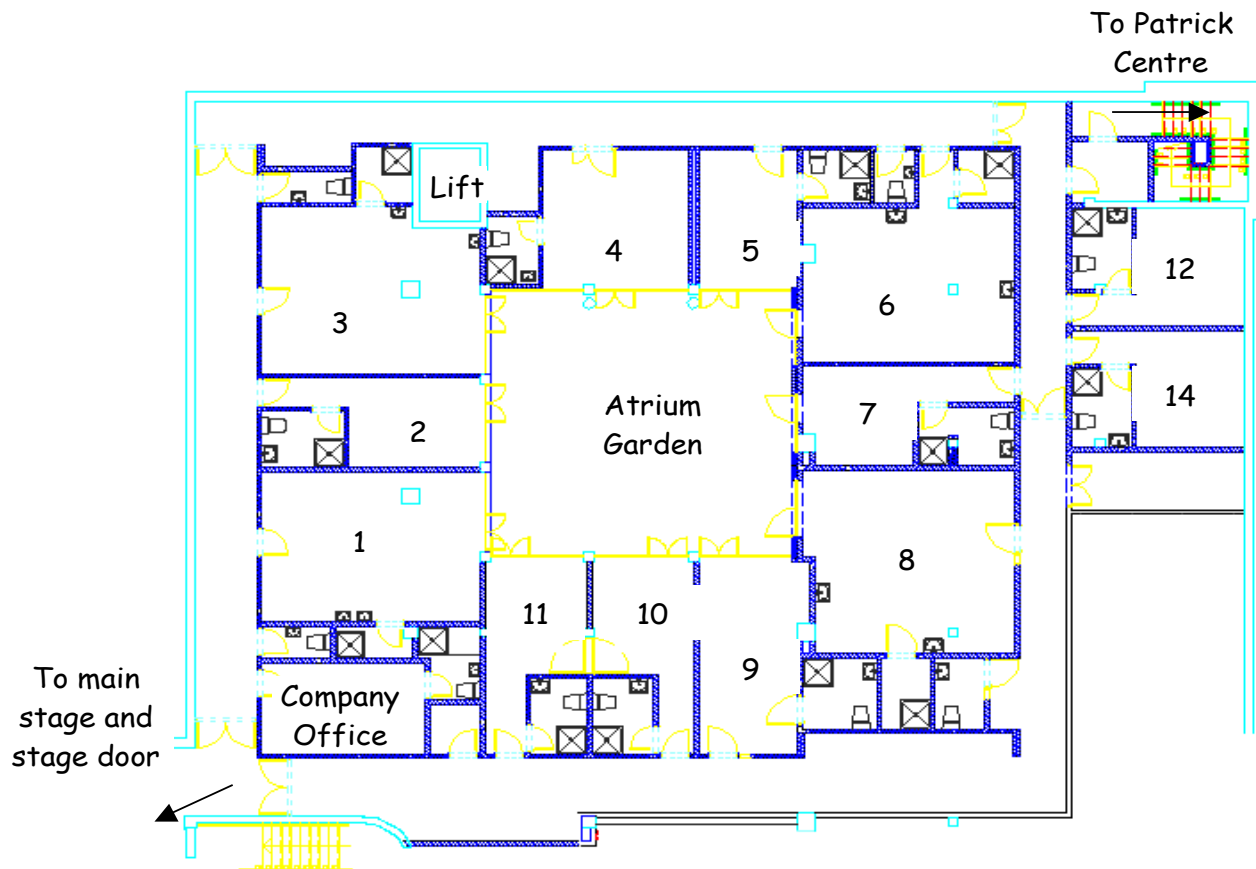
Entire Site layout



Dressing room information

Main building dressing room accommodation

Dressing room accommodation is at one level below stage with all rooms having TV, telephone, air conditioning and ensuite shower. Room allocation is as follows:



Main Dressing room block level 1 Patrick Centre Dressing rooms

Room Number	Capacity	Washbasin	Toilet	T.V.	Telephone Extension
12	5	1	✓	✓	3312
14	5	1	✓	✓	3314

Main Dressing room block level 2 Patrick Centre Dressing room

Situated at the rear of the Patrick Centre at stage level

Room Number	Capacity	Washbasin	Toilet	T.V.	Telephone Extension
15	1	1	✓	x	x

Other information

The Green Room (Visiting Company & Staff Canteen)

Situated on level 4 main building (second floor) is the staff restaurant opening times are 10:00 until 17:30 on a non show day, and until 19:00 on a performance day. Please check with Stage Door as times do change.

Outside of these times vending machines are available with a selection of cold and hot drinks and snacks on levels 2 and 4

Note:

No Cooking is allowed backstage. The Duty Management team can provide catering requirements.

Please contact:

Duty Managers Office

Tel: 0121 689 3133

House Opening Times

The policy of this Theatre is to open the Patrick Centre auditorium to the public 20 Minutes before the start of any performance.

If you should at any time require an alteration of this please inform the Duty Manager in sufficient time - otherwise the house will automatically be opened 20 minutes to curtain up.

Notes

Patrick Studio in Birmingham Hippodrome is a receiving house.

Any cleaning of the stage and auditorium that is deemed above and beyond a 'standard' – such as confetti, Liquids, chalk or paints - after a show or load out may incur a charge. If your show does include any special effects items, please inform the Hippodrome at the earliest convenience.

Do not use gaffa tape on cables and floor.

No screwing into the floor or walls.

We do not have workshops available for painting, repairing or building scenery.

There are no props or wardrobe departments; subsequently we have difficulty in providing incoming companies with costumes, ironmongery, timber, paints, tools, props etc.

We do not provide runners.

DWG's of the Studio can be provided upon request

Private cars including, people carriers, estates and four-wheel drives are NOT allowed to park on the loading bay.

ALL ELECTRICAL EQUIPMENT BROUGHT INTO THE VENUE BY THE VISITING COMPANY MUST COMPLY WITH THE *17th EDITION IEE WIRING REGULATIONS*, AND MUST COME WITH A VALID AND CURRENT ELECTRICAL SAFETY TEST CERTIFICATE EVEN IF IT IS HIRED FROM A THIRD PARTY.

ALL RIGGING EQUIPMENT MUST COMPLY WITH THE *LIFTING OPERATIONS AND LIFTING EQUIPMENT REGULATIONS* AND MUST COME SUPPLIED WITH A VALID AND CURRENT TEST CERTIFICATE EVEN IF IT IS HIRED FROM A THIRD PARTY.

BIRMINGHAM HIPPODROME AND ITS EMPLOYEES HAVE THE RIGHT TO REFUSE TO USE ANY EQUIPMENT THAT THEY THINK IS UNSAFE OR UNSUITABLE FOR THE TASK INTENDED.

WE ARE NOT ABLE TO PRE-RIG UNLESS AGREED IN ADVANCE AND BY CONTRACT WITH BIRMINGHAM HIPPODROME AND THE VISITING COMPANY.

THE TECHNICAL DEPARTMENT MUST RECEIVE ALL TECHNICAL REQUIREMENTS IN THE FORM OF A RIDER AT LEAST FIVE WEEKS PRIOR TO THE EVENT. THIS MUST INCLUDE, AS A MINIMUM, GET-IN SCHEDULE, STAFF REQUIREMENTS, EQUIPMENT REQUIREMENTS, LIGHTING AND GROUND PLANS, RISK ASSESSMENT AND SPECIAL EFFECT LICENSE REQUIREMENTS.

Please note all information contained in this document is subject to alteration.

E & O E

Location details

Directions to find us from the M6

- From the Junction 6 of the M6 follow the signs for Birmingham Central.
- Follow the A38 (M) for 2 miles (signs for the city centre)
- At the end of the motorway, take the flyover signed M5 South West.
- Coming off the flyover, pass under the tunnel following signs for Inner Ring Road South.
- Take the next tunnel (Queensway).
- Get in left hand lane and take the slip road after the second underpass to 'Pagoda Island'.
- Go straight over on the roundabout and take the first left on to Thorp Street
- Patrick Studio loading doors are just past Main Reception

Directions to find us from the M5

- From junction 4 follow the signs for Birmingham along the A38 through Northfield and Selly Oak.
- Going over the traffic lights at Bristol Street (McDonalds on your left), move into the left lane (signed New Street Grand Central).
- Passing the o2 Academy on your left, move into the right hand lane.
- Turn full circle at this roundabout (Holloway Circus)
- Take first left (Thorp Street)
- Patrick Studio loading doors are just past Main Reception.

Directions to find us from New Street Station – pedestrians only.

- Follow the exits signs for South Side.
- Cross over the road.
- Continue down the Hill.
- At the Crossroads for Smallbrook Queensway and Hurst Street, go straight over onto Hurst Street.
- One hundred yards on the right side turn onto Thorp Street. Stage Door is located here.